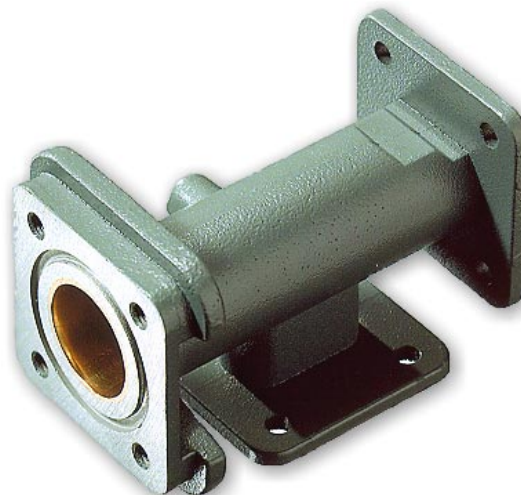


## **SMW OMT 30**



### ***Ortho Mode Transducer***

An Ortho Mode Transducer is the best way to receive two polarizations with high cross polarizations (isolation) and minimal transmission loss. The OMT 30 has a Cross polarization of min. 31.5 dB with a loss of only 0.1 dB within the frequency ranges 10.7 - 12.75 and 14.0 - 14.5 GHz

In the extensive test program we test and tune each unit for the best isolation, minimal transmission loss and the best matching against the most common feedhorns and LNBS on the market.

Swedish Microwave was founded 1986 and, within Europe, is the oldest manufacturer of LNBS. In the standard product range we have DRO-LNBS, PLL-LNBS, LNAs, Block Downconverters (BDC), Up- & Down Converters, Quattro LNBS, Twin LNBS, Ortho mode transducers (OMT), Line Amplifiers and Feed horns.

Swedish Microwave is today one of the leading manufacturers of microwave components needed for satellite receiving equipment and other industrial products.

# Specification SMW OMT 30

## SMW

## OMT 30

Frequency range	10.7 - 12.75 (V+H) & 14.0 - 14.5 GHz (V+H)
SWR	1.5:1max
Transmission loss	0.1 dB
Isolation (Cross polarization)	31.5 dB min
Input	Circular waveguide 18 mm
Output	WR75 waveguides
Material	Zinc
Weight	200 g
Accessories	Bend for the vertical polarization Adapter C120/C120 (if the hole pattern doesn't match the feedhorn) Depolarizer to receive RHC and LHC simultaneously

